



**SuperForm**<sup>TM</sup>

Building a better future.



RESIDENTIAL

[superformicf.com](http://superformicf.com)

Project | **Tamarack Housing**

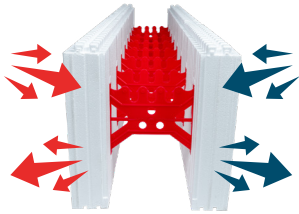




# Building a better future.

SuperForm is a family-owned company based in Pincher Creek, AB, with a vision of building a better future. We produce high-quality and sustainable building products for our customers, providing them with peace of mind and the confidence that their projects are built efficiently, reliably, and can withstand even the most extreme elements Mother Nature has to offer. Our insulated concrete wall system keeps your home warmer in the winter and cooler in the summer, keeping you comfortable while reducing energy costs. Whether you need to stay safe or just stay comfortable, SuperForm ICF protects your family **and ensures you enjoy the benefits for decades to come.**

## Benefits and Features



### **Unmatched Comfort**

Thick continuous insulation panels on each side of the concrete wall create a better living experience. You will love the quiet, draft-free experience of living in a SuperForm ICF house.

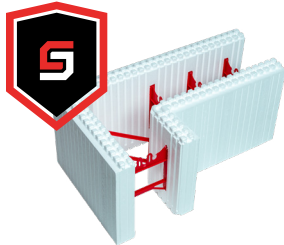
### **Energy Efficient**

The combination of thermal mass, an airtight structure, and zero thermal bridging allows for year-round energy savings of up to 60% and can easily meet Net-Zero Energy requirements.



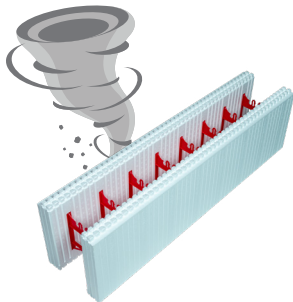
### **Design Versatility**

Designed to meet any forming requirements from foundations to the eaves. With ties every six inches, fastening the interior/exterior finishings of your choice has never been easier. This ensures your ICF home can be designed and built exactly as you dreamt.



### **Sustainable**

SuperForm ICF walls are built with concrete and an insulation that doesn't break down or lose R-value over time. Your building will have infinite durability and lower maintenance during its lifetime. SuperForm ICF is 100% rot and mold/mildew resistant.



### **Disaster Resilient / Strong**

SuperForm performs at an incredible level, making it an easy choice for your build. Due to concrete in SuperForm ICF curing 30% stronger than conventionally formed concrete, it can handle everything thrown at it, such as fires, tornados, hurricanes, or high winds up to 400km/h(250mph). SuperForm ICF will stand the test of Mother Nature, saving homeowners and building owners the stress and difficulty of rebuilding their projects.

---

For more information check out our website [superformicf.com](https://superformicf.com)





Project | **Tamarack Housing**

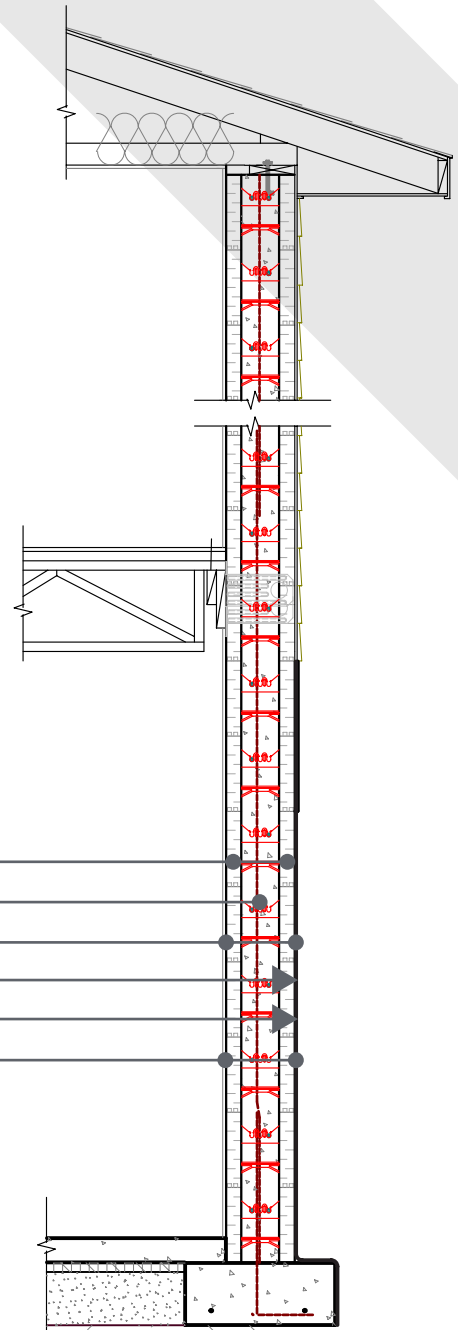


► **Location:** Waterton National Park    ► **ICF Size Used:** 6"

# A Complete Package

The SuperForm ICF system completes all six major building steps in one process. SuperForm ICF incorporates concrete, steel reinforcement, insulation, air barrier, vapour barrier and attachment points into one easy step, saving significant time and resources. 100% of SuperForm ICF components are manufactured in house in Canada and the USA, meeting international building codes.

- ▶ Forming System ●
- ▶ Wall Structure (rebar & concrete) ●
- ▶ Continuous Insulation ●
- ▶ Air Barrier ●
- ▶ Vapour Barrier ●
- ▶ Interior & exterior attachment points ●





**T** 877.627.3555  
**F** 403.627.3553  
**E** info@superformicf.com

[superformicf.com](http://superformicf.com)

**Follow Us On**



## **Specs**

Tie Flange Thickness: **Up 7.25mm (5/16")**  
Tie Spacing: **6"**  
Wind Resistance: **Up to 400km/h (250mph)**  
Fire Rating: **4 Hours**  
Flame Spread: **< 10**  
Smoke Development: **< 300**  
Sound Class Rating: **55**  
R Value: **24 stand alone**  
R Value Performance: **Over a R40**  
**Up to 22 trees saved by using ICF vs wood frame**  
ICC # ESR-3466  
QAI # B1051-1

**Lets discuss your next project.**

**Distributed by:**

